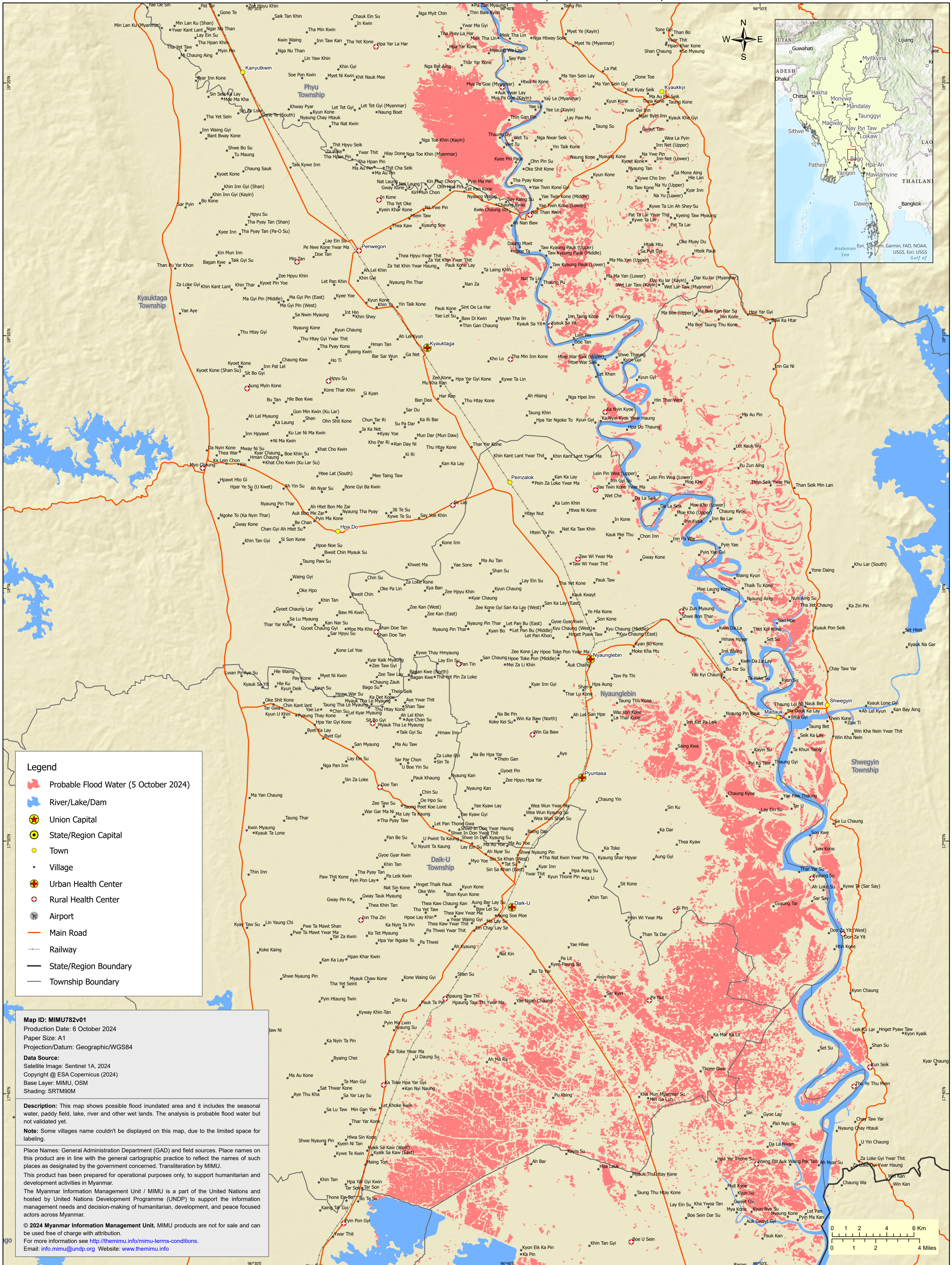


Probable Flood Inundated Area in Phyu, Kyaukkyi, Kyauktaga, Nyaunglebin, Shwegyin, Daik-U, Waw Township (Bago Region) as of 5 October 2024 (6:00 PM Local Time)



Legend

- Probable Flood Water (5 October 2024)
- River/Lake/Dam
- ★ Union Capital
- ★ State/Region Capital
- Town
- Village
- ⊕ Urban Health Center
- ⊕ Rural Health Center
- ✈ Airport
- Main Road
- Railway
- State/Region Boundary
- Township Boundary

Map ID: MIMU782v01
Production Date: 6 October 2024
Paper Size: A1
Projection/Datum: Geographic/WGS84

Data Source:
 Satellite Image: Sentinel 1A, 2024
 Copyright © ESA Copernicus (2024)
 Base Layer: MIMU, OSM
 Shading: SRTM90M

Description: This map shows possible flood inundated area and it includes the seasonal water, paddy field, lake, river and other wet lands. The analysis is probable flood water but not validated yet.

Note: Some villages name couldn't be displayed on this map, due to the limited space for labelling.

Place Names: General Administration Department (GAD) and field sources. Place names on this product are in line with the general cartographic practice to reflect the names of such places as designated by the government concerned. Transliteration by MIMU.

This product has been prepared for operational purposes only, to support humanitarian and development activities in Myanmar.

The Myanmar Information Management Unit / MIMU is a part of the United Nations and hosted by United Nations Development Programme (UNDP) to support the information management needs and decision-making of humanitarian, development, and peace focused actors across Myanmar.

© 2024 Myanmar Information Management Unit. MIMU products are not for sale and can be used free of charge with attribution.
 For more information see <http://themimu.info/mimu-terms-conditions>.
 Email: info.mimu@undp.org Website: www.themimu.info

