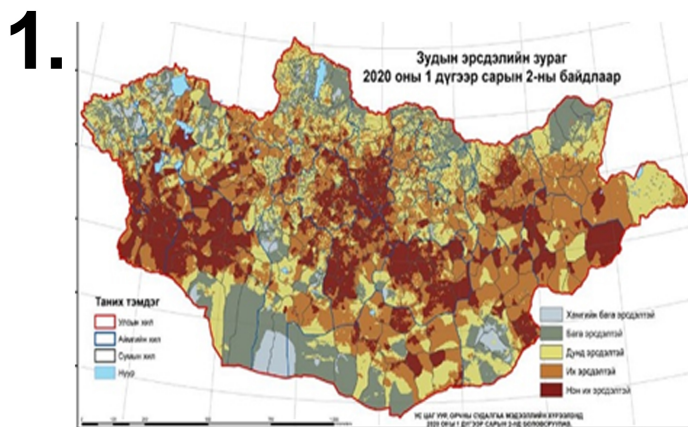




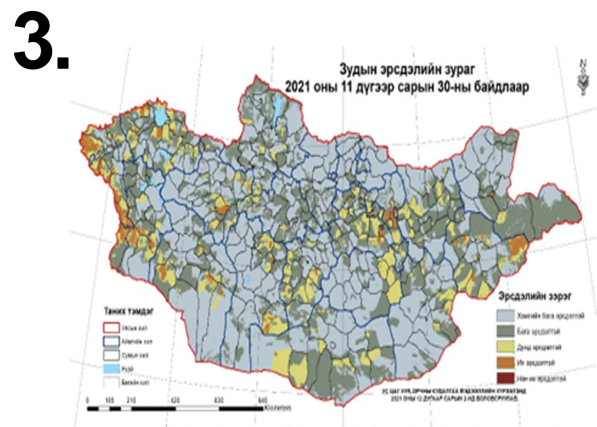
Monitoring visits conducted by IFRC/ARCS team to dzud-impacted soums in Dornod province (Photo: MRCS)

Appeal: MDRMN017	Total DREF Allocation CHF 570,650	Crisis Category: Yellow	Hazard: Cold Wave
Glide Number: CW-2022-000372-MNG	People Affected: 115,956 people	People Targeted: 11,660 people	
Event Onset: Slow	Operation Start Date: 2022-12-07	New Operational end date: 2023-06-30	Total operating timeframe: 6 months
Additional Allocation Re- quested 420,824	Targeted Areas:	Arhangai, Bayanhongor, Bayan-Ölgii, Dornogovi, Dundgovi, Govisumber, Govi-Altai, Khovd, Ömnögovi, Övörkhangai, Sükhbaatar, Töv, Ulaanbaatar, Uvs, Zavkhan	

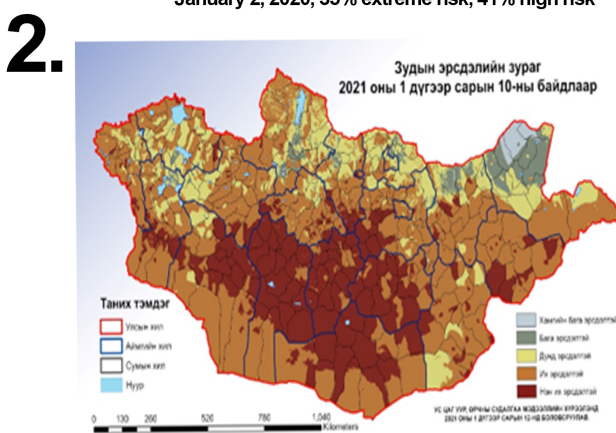
Description of the Event



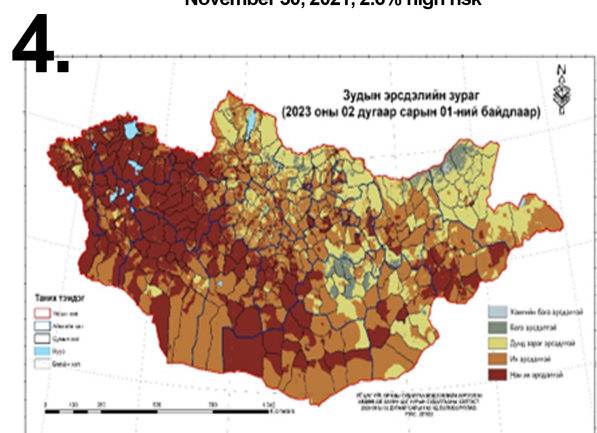
January 2, 2020, 35% extreme risk, 41% high risk



November 30, 2021, 2.6% high risk



January 10, 2021, 20% extreme risk, 60% high risk



February 1, 2023, 35% extreme risk, 41% high risk

Dzud risk maps for comparison (Source: NAMEM)

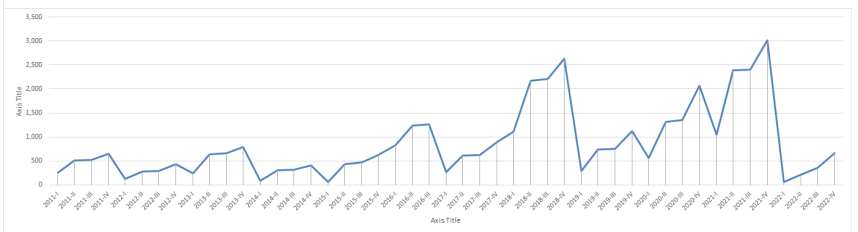
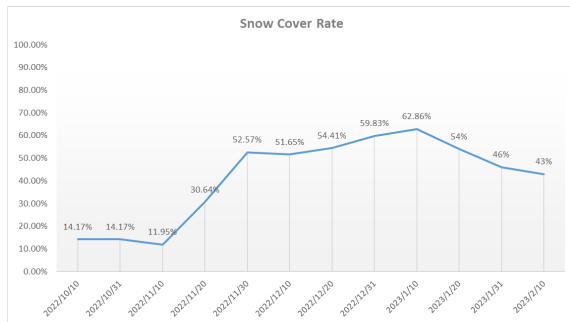
What happened, where and when?

Since October 2022 until 3 March 2023, there have been in total five dzud risk maps published from the Met office. The key information of the dzud risk is as follows:

- The 1st dzud risk map, published on 20 October 2022, indicates 0 per cent level of extreme risk, 25 per cent of high risk, 35 per cent of moderate risk, 20 per cent of low risk, 20 per cent of the least level of risk;
- The 2nd dzud risk map, published on 31 October 2022, indicates 0 per cent level of extreme risk, 30 per cent of high risk, 40 per cent of moderate risk, 20 per cent of low risk, 10 per cent of the least level of risk;
- The 3rd dzud risk map, published on 20 November 2022, indicates 3 per cent level of extreme risk, 33 per cent of high risk, 40 per cent of moderate risk, 19 per cent of low risk, 5 per cent of the least level of risk;
- The 4th dzud risk map, published on 2 December 2022, indicates 16 per cent level of extreme risk, 43 per cent of high risk, 33 per cent of moderate risk, 4 per cent of low risk, 4 per cent of the least level of risk;
- The 5th dzud risk map, published on 2 February 2023, indicates 35 per cent level of extreme risk, 41 per cent of high risk, more than 20 per cent of moderate risk.

The dzud risk map is generated based on several factors, including air temperature deviation, snow cover (density and height), pasture carrying capacity, and livestock number. The winter situation has been intensified by the extreme cold wave in January, where the air temperature reached -50 Celsius in Zavkhan and Uvs province. Meanwhile, in other provinces, the air temperature was colder by 3-4 Celsius than multi-year average, and snow coverage height was 37 cm as highest in the central region and averagely 27 cm in the western region, which prevents livestock from grazing.

According to NAMEM data, the percentage of Mongolia's land covered in snow has increased from 14 per cent in October 2022 to 43 per cent in February 2023. The whole country experienced high precipitation starting from early November to early December 2022, major snow storms in middle of January 2023 and more precipitation in late February 2023. In November 2022, the lowest temperature reached -47 Celsius in the night in Zavkhan, Khentii, Khuvsgul, Uvs, provinces, due to prolonged and heavy precipitation, over 70 per cent of the country was covered in high snow reaching 37 cm in central region with average of 21 cm, in western region, the average snow height was 24 cm. In January 2023, the peak of cold wave started from 15 January until the end of January. The following charts illustrate the snow cover rate (source: NAMEM) and quarterly accumulated perished livestock numbers (Source: National Statistics Office), respectively.



Snow cover rate

Quarterly accumulated perished livestock numbers

Scope and Scale

According to the National Agency for Meteorology and Environmental Monitoring (NAMEM) of Mongolia, 20 per cent of the country had low vegetation in the summer of 2022 due to high temperatures and low precipitation, which was more than double compared to 2021. The low hay and fodder reservation caused by the drought contributed to increased hay and fodder price.

As of 1 February 2023, the dzud risk map level indicates 35 per cent extreme risk and 41 per cent high risk, the highest level of extreme risk since January 2020 dzud risk map, when the Forecast based action by DREF was triggered by MRCS. Also, the inflation rate in 2022 was 13.20 per cent, which is six times higher than the rate in 2020; the dramatic inflation is decreasing the purchasing capacity of the herders and negatively affecting their coping capacity against the dzud situation.

According to the pasture carrying capacity map published on 29 August 2022 by NAMEM, 23.9 per cent of the total pasture has sufficient capacity and reserves, 15.6 per cent has moderate capacity, 34.4 per cent of the total pasture exceeded its capacity 1-3 times, 7.7 per cent exceeded its capacity 3-5 times, and 18.4 per cent exceeded its capacity multiple times. Comparatively, the pasture capacity in August 2021 was much better, with 42.1 per cent of the total pasture had sufficient capacity, which was two times higher than in August 2022, 24.6 per cent had moderate capacity, 25 per cent of the total pasture exceeded its capacity 1-3 times, 3.6 per cent exceeded its capacity 3-5 times, which was two times lower than in August 2022, 4.7 per cent exceeded its capacity multiple times, which is four times lower than the August 2022.

Normally, the livestock would graze on the pasture most of the time; however, due to the low vegetation, there's insufficient pasture for the livestock to graze on. Due to the winter condition, the herder households are already running out of their reserve of hay and fodder to feed their livestock. The pasture is covered with a thick snow layer, whereas drought-affected provinces have no pastures.

Based on historical data, the peak of livestock mortality is expected to occur between February to April. January is the coldest month when livestock are exposed and become malnourished; as a result of direct cold exposure and malnutrition, the livestock perishes in mass numbers. Consequently, the herder households lost the livestock upon which they rely heavily for food and income, resulting in psychological stress.

According to the taskforce staff at the Ministry of Food, Agriculture and Light industries, 29,346 herder households or 115,956 people are in the affected provinces. As identified through MRCS's two-staged criteria, 11,660 people or 2,934 herder households who were identified to be vulnerable by the soum authorities basing on their social status and by subsistence level threshold and who had not been assisted by any international or local organizations in Arkhangai, Bayan-Ulgii, Bayankhongor, Dornogovi, Dundgovi, Govi-Altai, Govisumber, Khovd, Umnugovi, Uvurkhangai, Sukhbaatar, Tuv, Uvs, Zavkhan, Dornod, Khentii and Baganuur, Bagakhangai districts in Ulaanbaatar.

Summary of changes

Are you changing the timeframe of the operation	Yes
Are you changing the operational strategy	Yes
Are you changing the target population of the operation	Yes
Are you changing the geographical location	Yes
Are you making changes to the budget	Yes
Is this a request for a second allocation	Yes
Has the forecasted event materialize?	No

Please explain the summary of changes and justification

In order to scale up the existing imminent DREF operation, the Mongolian Red Cross Society (MRCS) proposed extending the operation timeframe by an additional three months, to the end of June 2023. MRCS will support an additional 2,000 dzud-affected herder households through cash assistance intervention, distribution of animal care kits, and psychosocial support. The geographical locations of targeted populations will be expanded from 13 provinces to 20 provinces and 2 districts of the capital city, Ulaanbaatar. The total proposed budget increase for this operation is CHF 467,834 for the second allocation.

Currently, the number of people at extreme risk of dzud has increased from 29,662 people (when the imminent DREF was requested) to 115,956 people. Since the last dzud risk map (published as of 1 December 2022), the percentage of extreme risk areas has increased from 16 per cent to 35 per cent, according to the risk map published as of 1 February 2023.

Since January 2023, a total of 483,593 livestock have perished due to dzud as stated by the Ministry of Food, Agriculture and Light Industries on 3 March, among which 3,312 livestock deceased because of measles morbillivirus disease. Moreover, hay and fodder prices have increased dramatically due to the high demand and the high inflation in Mongolia. Some international organizations and local governments are in coordination to assist the affected households, but there is a still wide gap in needs.

Current National Society Actions



Baganuur Red Cross allocates aid from their campaign (Photo: MRCS)

<p>Livelihoods And Basic Needs</p>	<p>Currently, MRCS is applying for funding from the Swiss Agency for Development and Cooperation (SDC) to provide food and non-food/essential household items to 550 herder households affected by dzud.</p>
<p>Coordination</p>	<p>MRCS has continuously monitored the situation since the start of the dry spell. MRCS also has been in coordination with the National Emergency Management Agency (NEMA) and NAMEM to observe the deteriorating situation. MRCS national headquarters requested its provincial branches to submit primary assessments regarding drought situations in their respective provinces to identify the impacts of the droughts and gaps as well as needs. MRCS has been in close coordination with the IFRC Country Cluster Delegation in Beijing and its Participating National Societies with regular updates on the winter situation.</p> <p>The first Humanitarian Country Team (HCT) coordination meeting took place on 29 November 2022, later on 22 December 2022 and subsequently, another HCT meeting was convened on 12 January 2023 regarding to the dzud situation. MRCS and IFRC have been attending the HCT meetings to exchange timely information and coordinate the response efforts. During the 2nd HCT meeting for dzud coordination, NAMEM and State Emergency Commission updated the members on the current situation. The UN Resident Coordinators office stated of potential response with the support of UN OCHA and clusters system are activated. The activated clusters that are proposed to be activated include Education, Nutrition, WASH, Food Security and Agriculture, Protection (GBV and CP), Health, Camp Coordination and Cash Working Group. During the meeting on 12 January 2023, MRCS presented their early action from the Imminent DREF and the assessment results. The first cash working group meeting was organized on 18 January 2023 and MRCS joined the meeting to discuss about the challenges and to share their cash experience. Besides, MRCS has been requested to co-chair the cash working group.</p>
	<p>Rapid assessment was conducted by BDRT members in Bayan-Ulgii, Uvs, Khovd, Zavkhan, Govi-Altai, Bayankhongor provinces on 18-24 July 2022, it was identified that hay and fodder harvest was dramatically reduced due to drought. According to government 277th resolution in 2022, each provincial</p>

Assessment

government started preparing emergency stock of hay and fodder. Due to limited vegetation in the summer, especially the drought affected provinces Bayan-Ulgii, Govi-Altai, Zavkhan, Uvs, Khovd provinces were unable to collect the sufficient amount of hay and fodder. According to the mission report from FAO and the task force on dzud situation in the western region in October 2022, compared with planned amount of hay and fodder reserve, Bayan-Ulgii province was at 40.8 per cent prepared for hay, 51.5 per cent for fodder, Govi-Altai province was at 47.7 per cent for hay, 42.9 per cent for fodder, Zavkhan province was at 23.7 per cent for hay, 4 per cent for fodder, UVs province was at 53.2 per cent for hay, 43.6 per cent for fodder, Khovd province was at 77 per cent for hay, 32.5 per cent for fodder. Although a certain budget has been allocated by local governments to create emergency reserves, but due to unexpected rising prices for fuel, transport, hay and fodder, they are unable to fulfill the planned quantity as indicated by government decree. There are 4,670.2 tons of hay and 4,233.8 tons of concentrate would be needed to replenish the necessary stock in eight provinces.

NDRT members were deployed to the same provinces on 26 November to 3 December 2022 for assessment on winter condition. It was identified the herder households had already started using their reserve of hay and fodder because the livestock was unable to graze on the pasture.

The latest assessment was conducted jointly by IFRC and MRCS in the Eastern Provinces. Between 10-13 February 2023, the assessment team visited Dornod and Tuv province. According to the local authorities and the affected households, the livestock mortality had begun and local reserves were running out. As mentioned in previous Imminent DREF application, currently, 21,803 herder households (approximately 13,000 households from the at-risk provinces mentioned in the initial Imminent DREF application) are going on otor, where the households will move from their home seeking better pastures for the livestock. Before going on otor, it is mandatory to inform the governor and receive permission to proceed with the temporary relocation.

Mostly, the households will go to remote and isolated, hard-to-reach via vehicles areas. This situation put the vulnerable population including pregnant women, children toddlers, seniors, disabled people, and people with chronic diseases of the households at more risk since the household are isolated from health and public services. The herder nomads who travel with herds of sheep, goats, cattle, camels, horses, and/or yaks make up about one-third of the population of Mongolia. Some of the herders started their winter preparation as early as August 2022. This includes building animal shelters, destocking animals in an effort to maintain livestock productivity, and stockpiling hay and fodder as well as coal to maintain the temperature in ger. However, the preparation was not sufficient for the affected herders due to limitations on prices and availability of the items for stockpiling at the start of the winter.

These herders provide for their families, who depend on them for milk and meat supplies. Herders frequently retain their wealth in their herd, which means they have a lot of wealth in their livestock but little cash on hand. In times of need, these herd animals can be sold, and used in a barter system and they can serve as collateral for loans, besides then providing food for the family.

Risk Reduction, Climate Adaptation And Recovery

In the IFRC-supported Imminent DREF operation, certificates were distributed to the households who received the cash assistance. Information regarding climate change, pasture management, and sustainable herding was printed

	on the certificate. This will be continued during the additional implementation period.
Community Engagement And Accountability	MRCS activated its hotline number (98106106) for complaints and suggestions for the IFRC Imminent DREF operation and will continue so. Throughout the implementation of the dzud operation, MRCS received in total 34 calls relating to the operation.
Multi-purpose Cash	With the support of the IFRC Imminent DREF, MRCS has provided CHF 109 (MNT 370,000) of multi-purpose unconditional cash to each of 1,000 targeted herder households in January 2023. Furthermore, MRCS is funded by UNICEF Mongolia office to provide cash assistance to 400 dzud-affected herder households in two provinces. Through the bilateral funding of the Bureau for Humanitarian Assistance (BHA) of USAID, MRCS is providing cash to 850 households.

Movement Partners Actions Related To The Current Event

IFRC	MRCS has been updating IFRC Country Cluster Delegation (CCD) in Beijing since the drought conditions in July 2022. IFRC CCD Beijing and APRO provided technical support and quality assurance for MRCS in developing the application for the Imminent for the dzud. From 6-19 February 2023, two colleagues from CCD Beijing and APRO were deployed to Mongolia, where they assisted MRCS in conducting the Lessons Learnt Workshop for the Imminent DREF operation, meetings with key stakeholders and affected herder households, DREF overview briefing for NDRT members, and planning for the request for top-up funding for the DREF.
ICRC	Not available
Participating National Societies	Currently, MRCS is working together with the Australian Red Cross to revise the trigger model on the existing early action protocol (EAP). The existing EAP has already been triggered in 2020 and needs to be updated before the activation.

Other Actors Actions Related To The Current Event

Government has requested international assistance	Yes
National authorities	<p>NAMEM has released three dzud risk maps, respectively on 20 October 2022, 2 December 2022, and 1 February 2023, to inform the development of the dzud risks across the country.</p> <p>In February 2023, a working group headed by Member of Parliament, Member of the State Special Commission, and Minister of Food, Agriculture and Light Industry visited Arkhangai province, Zavkhan province, Khentii province, Dornod province, and Sukhbaatar province. Based on the risk assessment, the Government of Mongolia allocated 325 tons of fodder from the national reserve to Arkhangai province at a 50 per cent discount, while the branch ministry provided 10 million MNT for fuel support and computers to experts in charge of grazing and fodder issues of the province's Food and Agricul-</p>

ture Department. For Zavkhan province, the government provided 50 tons of fodder and 42 million MNT to the herdsman of soums at risk of dzud with the funding of the United Nations Food and Agriculture Organization. For Dornod province, the government decided to provide a 50 per cent discount price for vehicles with good driving ability, 220 tons of bran, fodder, and silage for uninterrupted delivery of government services to soum, where the winter is severe and there is a lot of snow. In dzud affected provinces, the local authorities are cleaning the snow covered roads which are isolating the remote herders from accessing the soum centers.

UN or other actors

In response to the dzud situation, Food Security Cluster, the Health Cluster, the Cash Cluster, and the Nutrition Cluster, Education Cluster, Protection Clusters have been activated.

On Food Security and Agriculture and Cash, UNFAO Mongolia is providing cash transfers to 510 households in 11 provinces to help them procure fodder at reduced government rates and ensure their livelihood is protected during dzud. Save the Children Mongolia is providing unconditional cash assistance, fodder, hygiene kit, and soum hospital support in five provinces. World Vision in Mongolia provided herders in seven provinces with unconditional cash transfers of \$90 per household to 1,772 households, food packages including flour, rice, and animal feed to 300 households, and warm clothes and hygiene packages to 450 children from high-risk areas. Adventist Development and Relief Agency (ADRA) International in Mongolia provided cash assistance to 150 herder households in Bayan-Olgii and Zavkhan provinces.

On Health and Nutrition, UNICEF Mongolia provided Personal Protective Equipment (PPE) for healthcare workers in three provinces (Khovd, Sukhbaatar and Uvs). UNFPA Mongolia distributed dignity kits to women and young girls affected by the dzud and to the frontiers who are responding to the dzud in 11 provinces. WHO Mongolia is providing support to deliver health care services for herders and the affected population, especially vulnerable people who are living in 'otor' camps and citizens in seven affected provinces.

Are there major coordination mechanisms in place?

MRCS has close bilateral relationship with the key stakeholders including NEMA, NAMEM, Ministry of Food, Agriculture and Light Industries, Ministry of Labor and Social protection. MRCS is a member of State emergency commission and the branch managers are the member of provincial emergency commission. Humanitarian country team is active and sharing regular updates among the members.

MRCS has been exchanging information with other agencies through coordination meetings with UN and other organisations working in Mongolia. More information on the 5W can be found through this here: Mongolia – UNOCHA 5Ws. Through this coordination, the duplication of effort in terms of household targeting is avoided among the humanitarian country team members.

Needs (Gaps) Identified



Health

According to interviews with the dzud-affected households, the herder community was under great stress due to the fear of losing the source of livelihood, and the economic situation. MRCS has volunteers who were trained in psychosocial support (PSS) at each midlevel branch and currently, they have been mobilized to provide PSS to the dzud-affected households and children at the dormitory via in-person visits, and mobile phone. As the dzud situation is expanding, there is a need to ensure sufficient personnel is trained in PSS to provide better support to the affected households.



Livelihoods And Basic Needs

The herder's livelihoods are directly dependent from their livestock production. Especially, those who have 50-400 livestock are most vulnerable to dzud since the recovery rate of the herd is low. Since 1 January 2023, 483,593 livestock have perished (as of 3 March 2023) due to dzud which is two times higher than the previous mortality in February 2022.

Based on the needs assessment, due to limited nourishment sources and cold exposure, the livestock health is in dreadful condition and livestock mortality will continue to rise from current amount. Also, the contributing factor to livestock mortality is a disease that killed 3,607 livestock (as of 3 March) in 15 provinces.

According to the local authorities in Dornod province, the livestock is becoming more exposed and vulnerable to livestock measles morbillivirus diseases because of the cold exposure and malnourishment. Currently, Mongolia is facing a shortage of vaccines for zoonotic diseases at the national level. Although efforts are being made by the Mongolian government to stock the vaccines, it is expected to take extended time due to high demand according to the local authorities in Dornod province.

To prevent the livestock from mortality, livestock supplements and treatment products are effective. The livestock care kit has been used as a response option for six years with MRCS. The contents of the kit is designed to prevent the livestock from damages and impacts from the severe winter condition. For example, the livestock try to remove the snow in order to eat the grass beneath in which process they often damage their hoof. In that case, the livestock kit contains hoof ointment which will improve the healing process and prevent the wound from deteriorating. There's also vitamin supplement, fish oil, mineral lick to support the digestive system of the livestock because due to the malnourishment, the digestive system is shocked and is not able to function even if the livestock are fed with hay or fodder.

As stated by the herder households, the livestock supplement is scarce in rural areas. Most of the soum centers do not have these livestock supplement. In order to buy them the herder households have to go to the provincial centers, which can be difficult due to the road conditions and cost for transportation.



Multi purpose cash grants

According to initial needs assessment conducted by BDRT in November 2022, the multipurpose cash was selected by the survey responders as the most preferred intervention modality. The herder households' income rely on livestock production and mostly seasonal. Due to drought, the livestock hadn't gain enough weight thus wasn't valued well on the market, leaving the herder households without any access to cash. The majority of the herder households who had engaged in the assessment stated that the through multi-purpose cash grants, they could

meet their immediate needs such as hay, fodder, fuel, medicine and warm clothes, food etc. To save their livestock the source of their livelihood, the herder population are spending more on the hay and fodder by cutting down spending on their basic needs. The price of hay and fodder have doubled due to the inflation which is intensifying the current situation.

The situation assessments was conducted by NDRT members in January 2023 in the western region and IFRC-MRCS joint assessment in Dornod, Tuv province from 10-13 February 2023. The households who had been affected by dzud stated their livestock health condition has dramatically deteriorated because of the extreme cold in January. The herder households were unable to prepare the required amount of hay and fodder due to the drought situation in the summer while the snow cover is still preventing the livestock to graze from the pasture.

Another major factor which is increasing the vulnerability of the herders is inflation, the inflation rate in Mongolia increased sharply from 2.3 per cent in 2020 to 13.8 per cent in 2021 and remained 13.2 per cent in 2022. Currently, the Mongolian inflation rate stands at 12.3 per cent as of January 2023. The herder households stated that the price of generally used items has increased dramatically, thus it's becoming harder to meet their immediate basic needs, while having to purchase hay and fodder for their livestock to keep them alive during the harsh winter. The households with small herd of livestock were reluctant to destock their livestock due to the relatively low meat price as there is sufficient supply of meat on the market after most large-size herders had started already destocking their livestock based on the summer outlook. This situation has also contributed to the decrease in income and cash of the herder households.

MRCS is using cash amount of MNT 370,000 or around CHF 108 per household and the value was determined with the assistance from the consultant in 2019. The value is survival minimum expenditure basket (SMEB) (MNT 1,085,605 or CHF 317) minus herder household average income (MNT 713,772 or CHF 208). Among the HCT members, the cash transfer value is shared. For different international organizations, FAO is basing their cash value on the hay and fodder needs of the livestock starting from USD 100 to up to USD 200, meanwhile World Vision is providing cash assistance basing on the minimum expenditure basket for food needs and their cash value is USD 90.

During the Lessons Learnt Workshop in February 2023, some MRCS mid-level Branches suggested to increase the current cash amount considering factors including the high inflation. Due to lack of adequate data support, MRCS decided to continue using the current value for the top-up interventions, but will conduct an in-depth analysis and calculation on the cash value after this operation.

Operational Strategy

Overall objective of the operation

Through the Imminent DREF, MRCS supported 4,860 people from 1,000 herder households at high dzud risk areas with unconditional cash assistance and PSS to prepare for the approaching dzud situation. As the dzud risks continue to increase, MRCS requested for top-up to the DREF operation to minimize the impacts of the severe winter on them and their livestock, targeting approximately another 6,800 people from 2,000 vulnerable households via unconditional multi-purpose cash assistance, animal care kits, and PSS support.

Operation strategy rationale

As the dzud is currently impacting the herder households, it is imperative to support enabling access to purchase food and other non-food items for the family members, hay and fodder for the livestock. This will allow the targeted households to cope with the negative impacts of the dzud.

Through the surveys conducted by MRCS in January and February 2023 with 126 herder households assisted via the

Imminent DREF, the majority of households appreciated the multi-purpose cash assistance as an effective and timely intervention. With unconditional cash assistance, herder households will be able to meet their immediate needs, such as hay, fodder, medicine, warm clothes, and food.

Due to the cold exposure and malnutrition, livestock health conditions have severely deteriorated. And based on the suggestion from the Lessons Learnt Workshop organized in February 2023, livestock care kits are recommended to be included in the top-up intervention as an effective and much needed item to reduce livestock mortality.

Targeting Strategy

Who will be targeted through this operation?

1st stage-criteria:

- must have min. 200- max. 400 livestock in sheep head number;

2nd stage-criteria: must meet following one of the criteria:

- Be single headed household with three or more children under 16;
- Household with disabled member;
- Household with lactating or pregnant woman;
- Senior herder (older than 60) who herd his livestock by himself;
- Household with five or more children under 16.

According to a vulnerability analysis conducted by MRCS in 2019, the population most exposed to the dzud is the herder population who have less than 400 livestock as the herders who have more than 400 livestock are considered to have more probability to recover from dzud damage as there's more chance, they will have animals left after the Dzud. The households with less than 200 households have high probability of being a idle herder who are urban dwellers who own livestock but have someone else to tend their livestock.

Geographic locations include Uvs, Zavkhan, Bayan-Ulgii, Khovd, Govi-Altai, Bayankhongor, Umnugovi, Uvurkhangai, Arkhangai, Dornod, Sukhbaatar, Khentii, Khuvsgul, Selenge, Darkhan, Bulgan but final locations will be chosen after the discussion with local authority and HCT members to avoid duplication of efforts and implement appropriate action.

Explain the selection criteria for the targeted population

MRCS will use its own its own eligibility criteria which is 2-phased eligibility criteria. In the 1st phase the criteria will see if the herder household is someone who actually herds the livestock themselves and whose livestock are the only source of livelihoods to themselves.

According to historical analysis, the population most exposed to the Dzud is the herder population who have up to 400 livestock. The previous threshold for the beneficiaries indicated that the beneficiary herder household must have had 50-200 livestock but after rigorous discussion and study, it was changed to up to 400 livestock.

To identify true herders (not idle herders who have livestock registration but don't actually herd the livestock themselves but rather have someone else to do it) and reduce the risk of idle herders are engaged in the program, the threshold was lifted to 400, this way the idle herders who usually have small herd will be excluded. With the previous criteria of 50-200 livestock, the true herders who have livestock more than 200 were excluded when they really needed the assistance.

With the current update, it will make the targeting more accurate, and make the programme more efficient and effective. Considering the chances that the risk of the households with small herd (less than 200) could be excluded, the assistance could be allocated basing on the official request from the county governor and the primary level branch verification.

In the 2nd phase, the criteria will see if the herder household meets the socio-economic vulnerability criteria which are:

- Single headed household with three or more children under 16.

- Household with disabled member.
- Household with lactating or pregnant woman.
- Senior herder (older than 60) who herd his livestock by himself.
- Household with five or more children under 16.

Based on the feedbacks from the Lesson Learnt Workshop organized in Feb, some MRCS Mid-level Branch suggested that the some of the criteria above may not apply to the practical situation now (e.g. number of big-size families with 5 or more children is decreasing in Mongolia) and MRCS could create a database of targeted households and conduct vulnerability analysis. This suggestion on the criteria review will be considered and studied by MRCS with the support of more data.

Total Targeted Population

Women:	3,166	Rural %	Urban %
Girls (under 18):	2,851	100.00 %	0.00 %
Men:	3,153	People with disabilities (estimated %)	
Boys (under 18):	2,490	3.00 %	
Total targeted population:	11,660		

Risk and security considerations

Please indicate about potential operational risk for this operations and mitigation actions


Risk	Mitigation action
The security framework of the National Society and IFRC is not fully applied in the operation.	The National Society's security framework will apply throughout the duration of the operation to their staff and volunteers. In case of need for deployment for personnel under IFRC security's responsibility, including surge support and integrated PNS, the existing IFRC country security framework will apply. All IFRC must, and RC/RC staff and volunteers are encouraged, to complete the IFRC Stay Safe 2.0 e-learning courses.
The current economic situation and political tensions are causing severe inflation in Mongolia as it's market is heavily dependent from the import. Most of the live-stock kit contents are produced locally in Mongolia but the ingredients of the contents and the fish oil are imported. Due to the reasons mentioned above, the supply chains are restrained causing the limitation of the goods available on the market.	MRCS have existing pre-agreements with the suppliers which will reduce the risk and the existing bi-lateral col-laboration with the Mongolian Customs General Admin-istration will fasten the progress of the procurement.

Please indicate any security and safety concerns for this operation

According to MRCS initial assessment, the transportation of the items could be delayed due to the snow and storm as more precipitation is anticipated in the coming months. To mitigate the potential risk, MRCS is engaging with NEMA and local emergency management authorities to pre-agree on the utilization of their vehicles in anticipation transportation vehicle challenges occurring at the time of the implementation period.

Planned Intervention

	National Society Strengthening	Budget	CHF 47,735
		Targeted Persons	60
Indicators	Target	Actual	
# of DREF training conducted	1	1	
# of lessons learnt workshop conducted	2	1	
Progress Towards Outcome			
<p>The lessons learnt workshop for the Imminent DREF operation was organized on 8 February 2023 in the youth camp training center of MRCS. A total of 24 participants joined the workshop, including 4 from MRCS National Headquarters, 2 from IFRC, and 18 MRCS mid-level branch managers.</p>			

	Multi-purpose Cash	Budget	CHF 345,664
		Targeted Persons	11660
Indicators	Target	Actual	
# of households who received cash assistance	3000	1000	
Progress Towards Outcome			
<p>Unconditional multipurpose cash was provided to 4,860 people from 1,000 herder households through the Imminent DREF support.</p> <p>Additionally, certificates of aid for the targeted population, which include key messages from "Be Ready" module on climate smart agriculture were distributed to each of the 1,000 herder households supported via the Imminent DREF.</p> <p>As part of plan, monitoring visits were conducted from January to February, in which three different teams traveled to Bayan-Ulgii, Khovd, Govi-Altai, Bayankhongor, Uvurkhangai, Tuv, Uvs, Zavkhan, Dornod, Khentii provinces for the monitoring.</p>			

	Health	Budget	CHF 1,727
		Targeted Persons	11660
Indicators	Target	Actual	
# of people who received PSS services	11599	4860	

Progress Towards Outcome

To date, a total of 23 in-person households visits were paid by relevant mid-level branches. Additionally, remote support was provided to 34 households.

	Risk Reduction, Climate Adaptation And Recovery	Budget	CHF 17,213
		Targeted Persons	11600
Indicators	Target	Actual	
# of people who received key messages on Climate smart agriculture	11600	4860	

Progress Towards Outcome

Certificates of aid for the targeted population which included key messages from "Be Ready" module on climate smart agriculture were distributed to each of the 1,000 herder households supported via the Imminent DREF.

	Secretariat Services	Budget	CHF 10,650
		Targeted Persons	0
Indicators	Target	Actual	
# of monitoring visits conducted	5	5	

Progress Towards Outcome

IFRC and MRCS has conducted a joint field assessment visit to Dornod province and Tuv province from 10-13 February 2023.

	Livelihoods And Basic Needs	Budget	CHF 136,435
		Targeted Persons	6800
Indicators	Target	Actual	
# of household receive livestock care kits	2000	0	

Progress Towards Outcome

Progress on this sector will be reported in the next report.

		Budget	CHF 11,226
		Targeted Persons	11660

Community Engagement And Accountability		
Indicators	Target	Actual
# of people reached with CEA activities	11660	4860
Progress Towards Outcome		
<p>A Hotline number for the complaints and suggestions from the beneficiaries and stakeholders has been activated for the response. Furthermore, on certificates distributed to herder households who received cash assistance from the Imminent DREF, IFRC and MRCS logos were printed for visibility purposes.</p>		

About Support Services

How many staff and volunteers will be involved in this operation. Briefly describe their role.

Refresher training for volunteers will be provided to ensure effective response. A total of 150 members of BDRT are expected to engage in the operation for management at the local level such as distribution, community engagement and accountability, monitoring, evaluation.

Will surge personnel be deployed? Please provide the role profile needed.

If there is procurement, will it be done by National Society or IFRC?

Logistics for the cash transfer programming will include the bank transfers to the recipient beneficiaries via Khan bank who has been working with MRCS since 2016. MRCS and Khan Bank work together under the Framework Agreement which is revised annually. The DREF budget will cover the bank fees related to these transfers. Transport and distribution costs will be included in this DREF budget. According to brief market assessment, all provinces have available and functioning markets which make it feasible for conditional cash grant.

Since this operation will be utilising Services Procurement for the Financial Services Provider (FSP) and local procurement for livestock care kits, it is expected that the procurement procedures will be aligned and follow the IFRC Services Procurement standards and guidelines.

How will this operation be monitored?

MRCS planning, monitoring, evaluation and reporting team members will monitor the implementation of the DREF operation in the field with support from NDRT members, with the participation of IFRC. An internal review by MRCS of the DREF operation will be carried out after the operation ends. At least, three teams will be deployed to monitor the implementation of the operation via in-person visits.

Please briefly explain the National Societies communication strategy for this operation.

With support from the regional communications unit in Kuala Lumpur, the IFRC CCD communications delegate will support the production of news stories to be published on the IFRC website. Participating National Societies will be provided with information on the response through Newswire and information bulletins. MRCS hotline number for the complaint and feedback is active and MRCS staff are attending Humanitarian Country Team and State Emergency Commissions meeting regularly.

Contact Information

For further information, specifically related to this operation please contact:

• National Society contact:

Munguntuya Sharavnyambuu, Director, Climate change and disaster management department, munguntuya.sh@redcross.mn, +976 99311909

• IFRC Appeal Manager:

Olga DZHUMAeva, Head of Country Cluster Delegation for East Asia, Beijing, olga.dzhumaeva@ifrc.org

• IFRC Project Manager: Xiao Zheng, Senior Officer, Disaster Risk Management, xiao.zheng@ifrc.org

• IFRC focal point for the emergency: Nusrat Hassan, Operations Coordinator, opscoord.eastasia@ifrc.org

[Click here for the reference](#)